

**LEGEND**

**DEVONIAN**

**Dg** Even grained and porphyritic granite. Meredith Granite

**CAMBRIAN**

**Cddg** Coarse grained dolerite.

**Csp**

Sheared, serpentinised, very coarse grained pyroxenite.

**Cba**

Strongly foliated and massive, coarse grained andesitic volcanics and subordinate porphyritic, amygdular and equigranular, andesitic lava. Basaltic rocks appear to be minor.

**Ew**

Mostly hornfelsed, quartz-poor, greywacke sandstone of mainly medium grain size, with interbedded siltstone and shale. Rare interbedded basalt. Commonly the sandstone contains disseminated magnetite.

**Fault**

Geological boundary

Boundary of western soil anomaly of the Arthur Dam prospect.

Diamond drill hole and number



**STELLAR RESOURCES LTD**

**EL 1/2004 - RAMSAY**

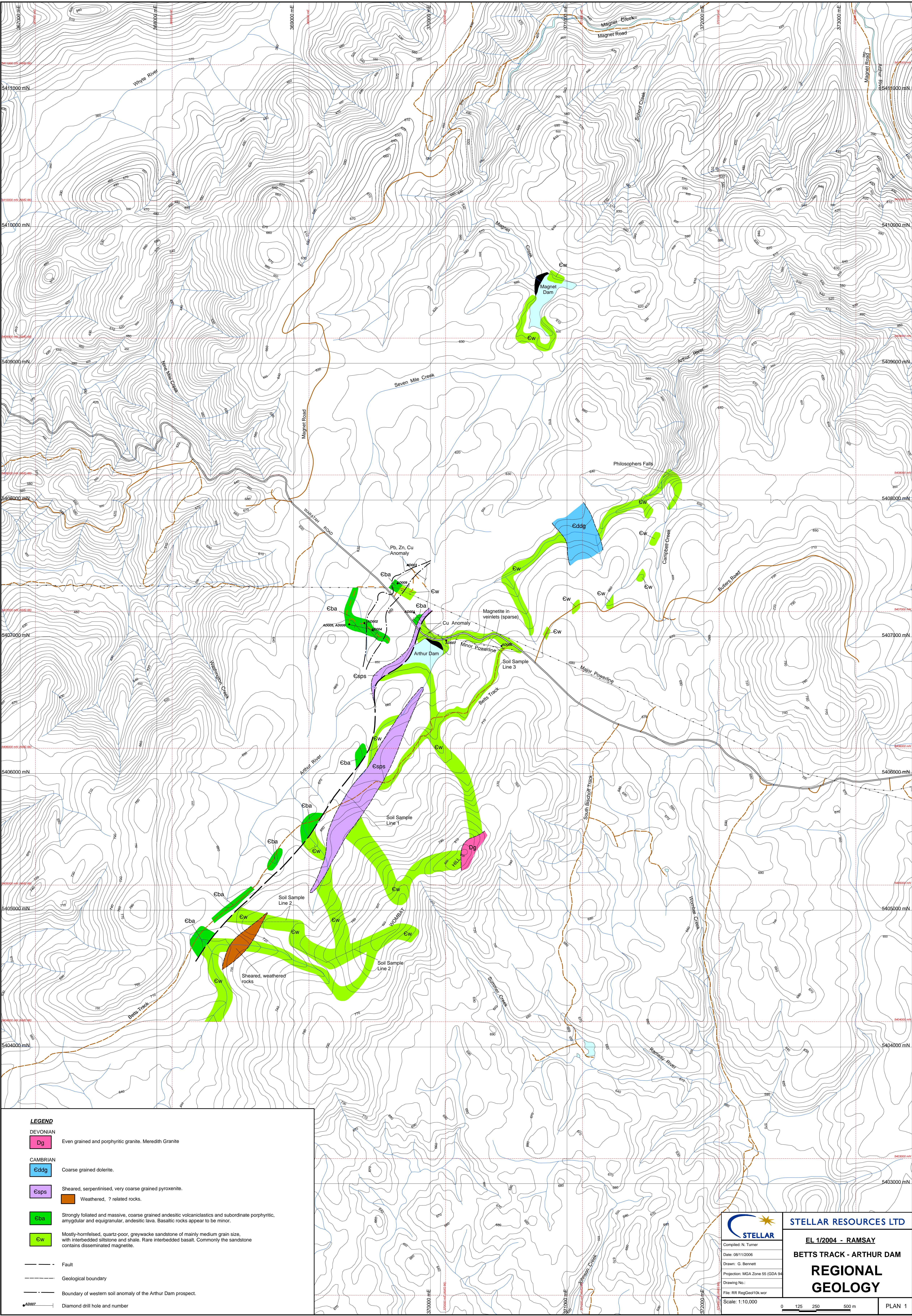
**BETTS TRACK - ARTHUR DAM**

**REGIONAL GEOLOGY**

Compiled: N. Turner  
Date: 08/11/2006  
Drawn: G. Bennett  
Projection: MGA Zone 55 (GDA 94)  
Drawing No.:  
File: RR\_RegGeol10k.wor  
Scale: 1:10,000

0 125 250 500 m

PLAN 1



**LEGEND**

**DEVONIAN**

**Dg** Even grained and porphyritic granite. Meredith Granite

**CAMBRIAN**

**Cddg** Coarse grained dolerite.

**Csp**

Sheared, serpentinitised, very coarse grained pyroxenite.

**Cba**

Strongly foliated and massive, coarse grained andesitic volcanics and subordinate porphyritic, amygdular and equigranular, andesitic lava. Basaltic rocks appear to be minor.

**Ew**

Mostly hornfelsed, quartz-poor, greywacke sandstone of mainly medium grain size, with interbedded siltstone and shale. Rare interbedded basalt. Commonly the sandstone contains disseminated magnetite.

**Fault**

Geological boundary

Boundary of western soil anomaly of the Arthur Dam prospect.

Diamond drill hole and number



**STELLAR RESOURCES LTD**

Compiled: N. Turner  
Date: 08/11/2006  
Drawn: G. Bennett  
Projection: MGA Zone 55 (GDA 94)  
Drawing No.:  
File: RR RegGeol10k.wor  
Scale: 1:10,000

**EL 1/2004 - RAMSAY**  
**BETTS TRACK - ARTHUR DAM**  
**REGIONAL GEOLOGY**

0 125 250 500 m PLAN 1

